

An aerial photograph of a large, well-maintained green field, possibly a soccer field, surrounded by trees and a clear blue sky with scattered white clouds. A large, thick, orange brushstroke graphic is overlaid on the left side of the image, partially obscuring the field and sky. The text "CLARK: a safe haven" is centered in the upper right portion of the image.

CLARK:
a safe haven

CATALYST FOR NATIONAL GROWTH



CLARK

32,000 HECTARES

SUB-ZONE
18,000 HECTARES

NEW CLARK CITY
9,450 HECTARES

AIRPORT AREA
2,300 HECTARES

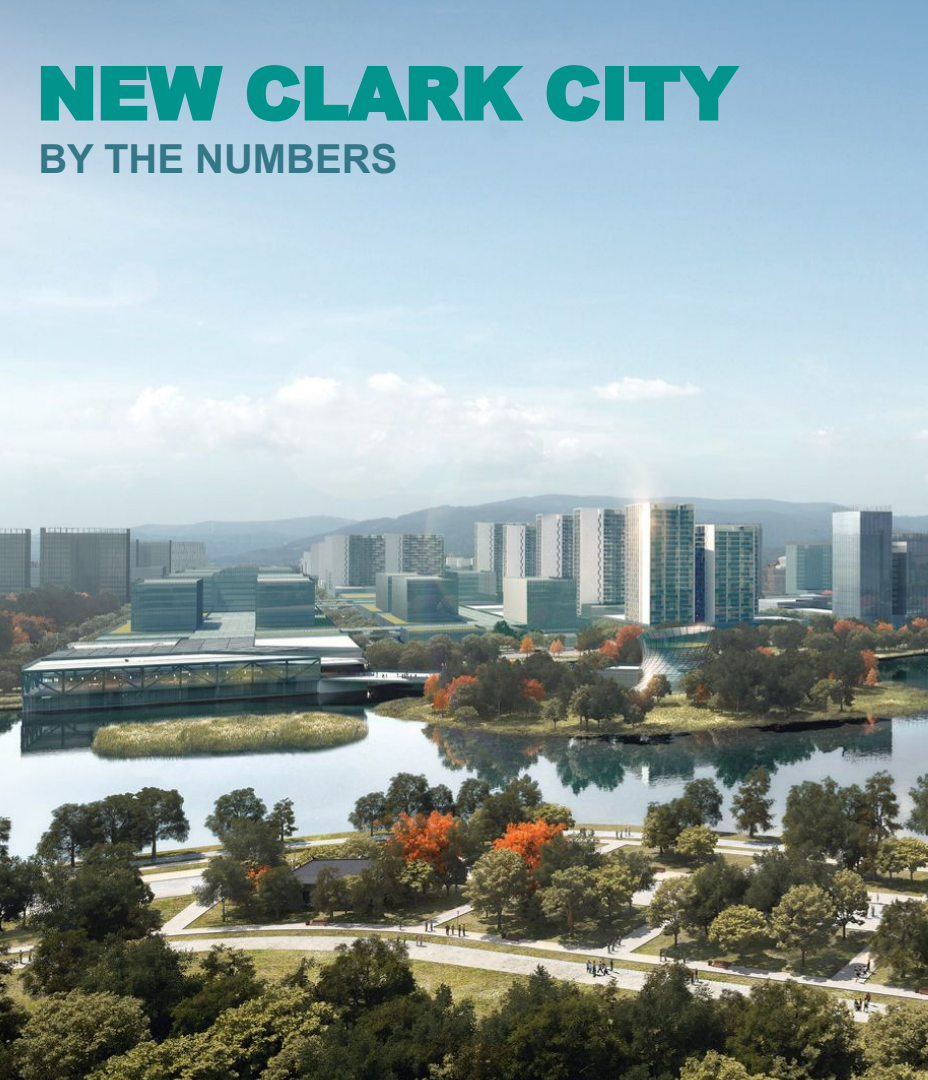
MIXED-USE AREA
2,100 HECTARES

SCTEX

A map of the Clark development area, showing four distinct zones: New Clark City (9,450 hectares), Sub-Zone (18,000 hectares), Airport Area (2,300 hectares), and Mixed-Use Area (2,100 hectares). The zones are color-coded: New Clark City is dark blue, Sub-Zone is light grey, Airport Area is white, and Mixed-Use Area is light grey. An orange line representing the SCTEX road runs through the zones. The background is a blurred cityscape with a river and a stadium.

NEW CLARK CITY

BY THE NUMBERS



1st

smart, green, and resilient metropolis in the Philippines



9,450 hectares



1.2 million residents



600,000 workers +
provide indirect employment opportunities in Central Luzon



Soon to rise

National Government Administrative Center
Philippine Sports City
Food Processing Terminal
International Food Market
Mixed-use estate by Filinvest

Schools

University of the Philippines
Technological University of the Philippines
Philippine Science High School



RESPONDING WITH AGILITY

Image Credit: Workday Blog

TASK FORCE CLARK: A SAFE HAVEN

PHASE 1

Mobilizing Resources



PHASE 2

Converting Facilities



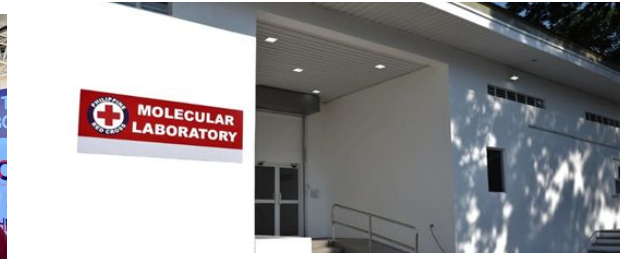
PHASE 3

Creating New Facilities



Mobilization of BCDA Resources to Respond to the COVID-19 Pandemic

- Mobilize teams within the BCDA Group and among key stakeholders to design, convert, operate and maintain surge capacity facilities
- Quick conversion of facilities within the New Clark City and Clark Freeport Zone with 2,500-bed capacity for Quarantine and Treatment Facilities
- Use of the Clark International Airport for Sweeper and Repatriation Flights





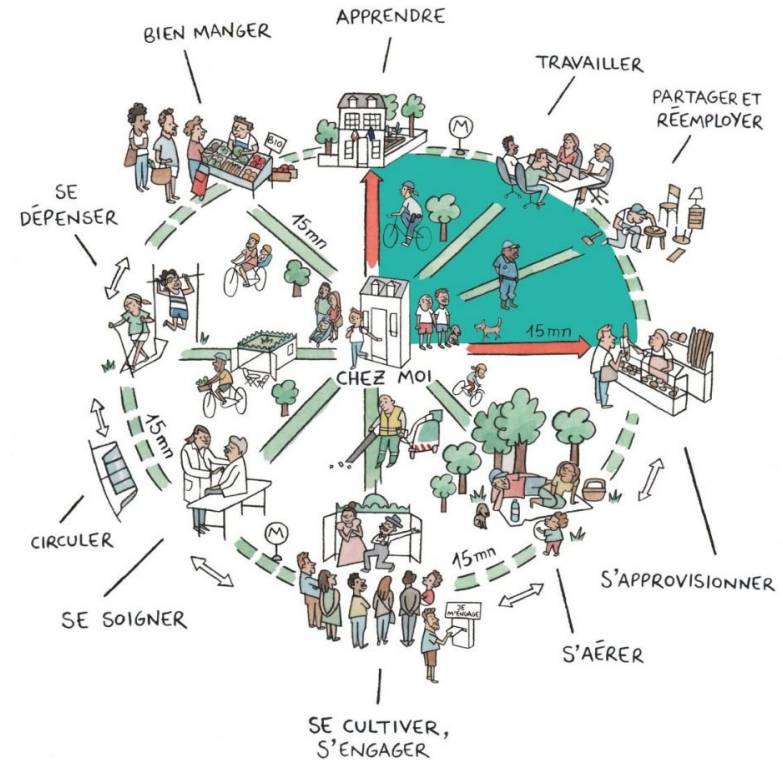
ADAPTING TO THE NEW NORMAL

Shift to hyper-local

LE PARIS DU 1/4 HEURE



- Independent walkable community
- Self-sufficient community master plan - everything in one place reducing need to travel to many places
- Identifiable separate building - limited access points - ease of lockdown
- Identifiable semi-private space enabling separate community clusters
- Everything is local. Local doctor, local daycare center local food shops, local drug store
- Flexible layout to encourage home working
- Being able to exercise locally - a fit community - sports, running , yoga , exercise
- Consider opportunity, to grow own food through allotments and micro farms



Re-think mobility and connectivity

- Redesigning streets along Bonifacio Global City to accommodate Personal Mobility Devices and shared bike lanes
- New Clark City master plan reserves 60% open space through city-wide green networks



Fast-track inclusive mobility

- Cities across the world are seeing governments embrace an opportunity for rapid change



Pasig Pop-Up Bike Lanes

@PinoyBikepacker



Paris Pop-Up Bike Lanes

@C-Najdovski NACTO-COVID19 Photo Library



Berlin Pop-Up Bike Lanes

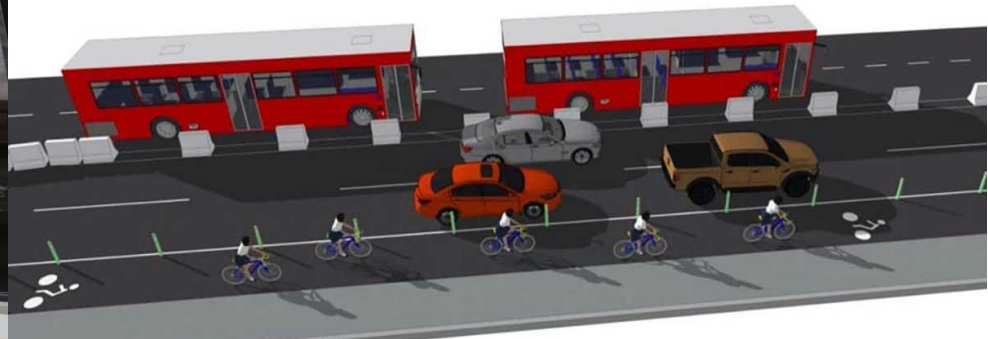
@bikeberlin13 NACTO-COVID19 Photo Library

Fast-track inclusive mobility

- Opportunities to create multi-modal solutions like BRT and active mobility being pursued along main corridors to offer diverse mobility solutions



TRANSFORMATION OF EDSA DESIGN APPROACH



Re-assess competitive advantage and pivot to new sectors

- Utilizing opportunities to create future-ready jobs
- Offering strategic harbors to capture global trade shifts in industrial uses (i.e. Poro Point Freeport Zone)
- Enabling digital infrastructure to provide enhanced city services and ease of doing business





ANTICIPATING CHANGE

Image Credit: CPA Canada

NEW CLARK CITY IS DISASTER-RESILIENT

1 EARTHQUAKES

NGAC is 19km away from the nearest fault line, East Zambales Fault. The facilities in NGAC can also withstand an 8.5 magnitude earthquake.

2 LAHAR AND ASH FLOW

NGAC is 35km from Mount Pinatubo but was not reached by the lahar flow during the last eruption in 1991 because of its high elevation. The government buildings are designed and built to carry 0.70 meter thick ash fall load.

3 FLOODING

The elevation is 60m above sea level as compared to Manila's 5m. The storm drainage is designed to accommodate a 1,000-year flood level.

4 TSUNAMIS

New Clark City is 54.17 km away from the nearest coastline.

5 SUPER TYPHOONS

Super typhoons and wind velocities are minimized due to the surrounding mountain ranges of Sierra Madre and Cordillera mountains.

6 LANDSLIDES

New Clark City terrains can be described as gentle rolling terrain with no deep ravines and steep slopes making the possibility of landslides to nil.

6 LIQUEFACTION

NGAC buildings are on sandstone bedrock with 8,000 pounds per square foot load bearing capacity as compared to normal soil with only 3,500 pounds per square foot load capacity



Integrate futures-thinking in governance

- Equip leadership with the ability to counter volatility, uncertainty, complexity, and ambiguity
- Beyond resilient infrastructure, focus on resilient governance and systems



clark
It works. Like a dream.



THANK YOU